



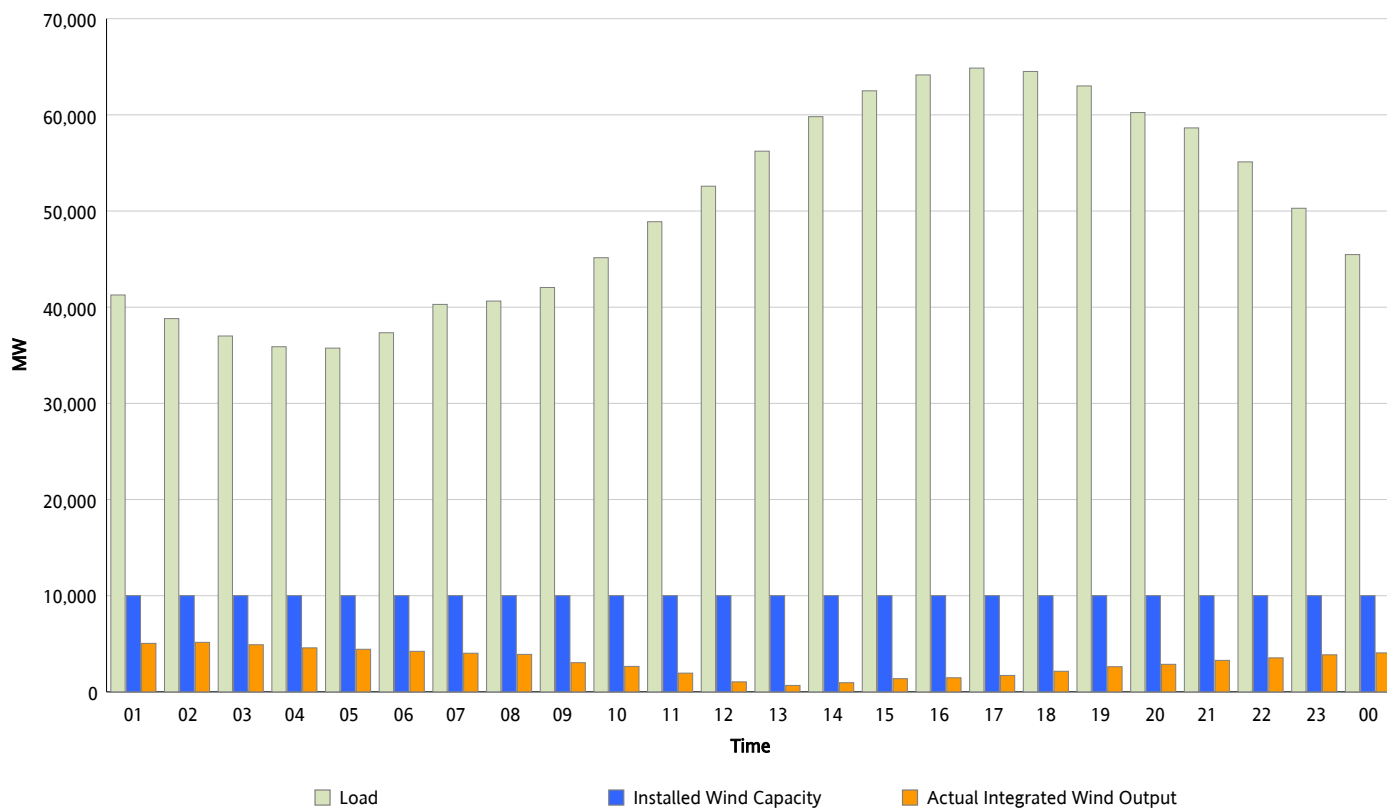
ERCOT Grid Operations

Wind Integration Report : 09/05/2012

Peak Load	64,865 MW
Load Peak Hour (HE)	17
Wind Over Peak	1,708 MW
Wind Record 06/19/12	8,368 MW
Max Wind Value*	5,250 MW
Wind Peak Time	01:21
Wind Integration %	13.39 %

Hourly Average Actual Load vs. Actual Wind Output

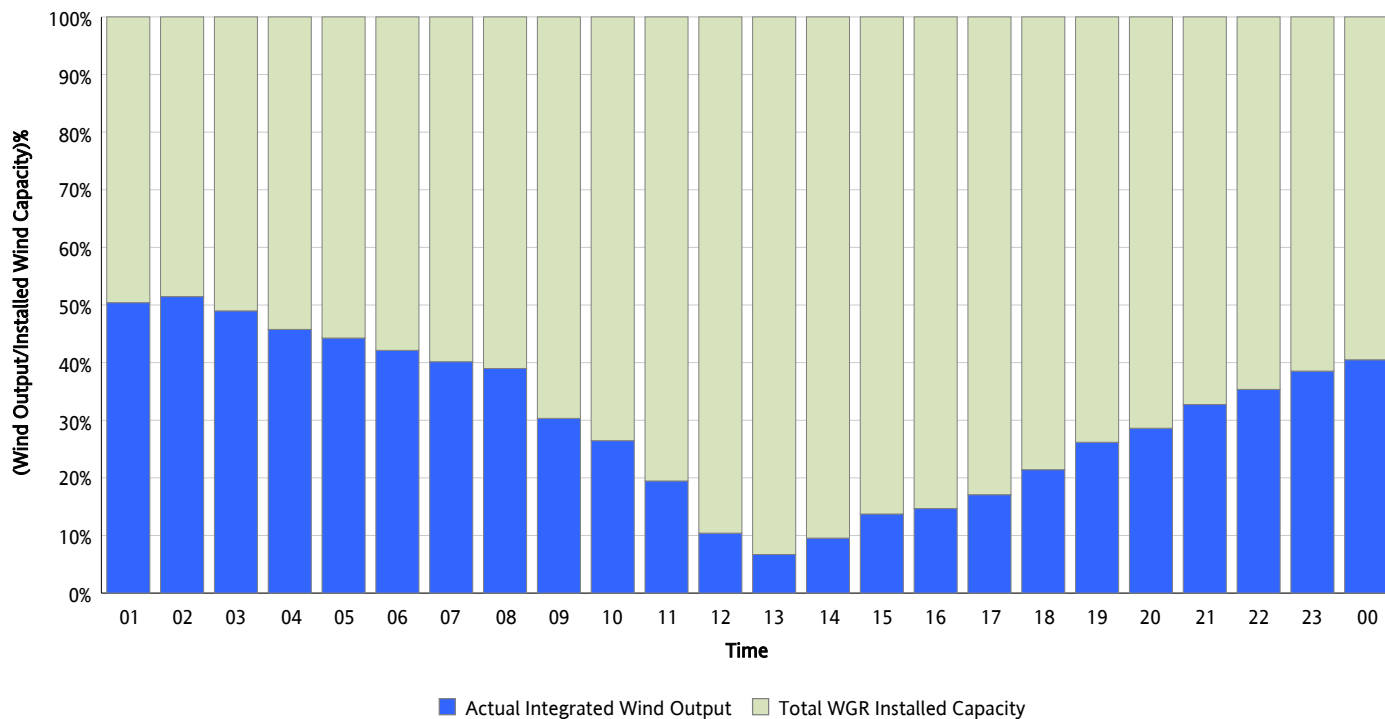
09/05/2012



* Wind Record and Wind Max represent instantaneous values and the rest of the values are integrated over the hour

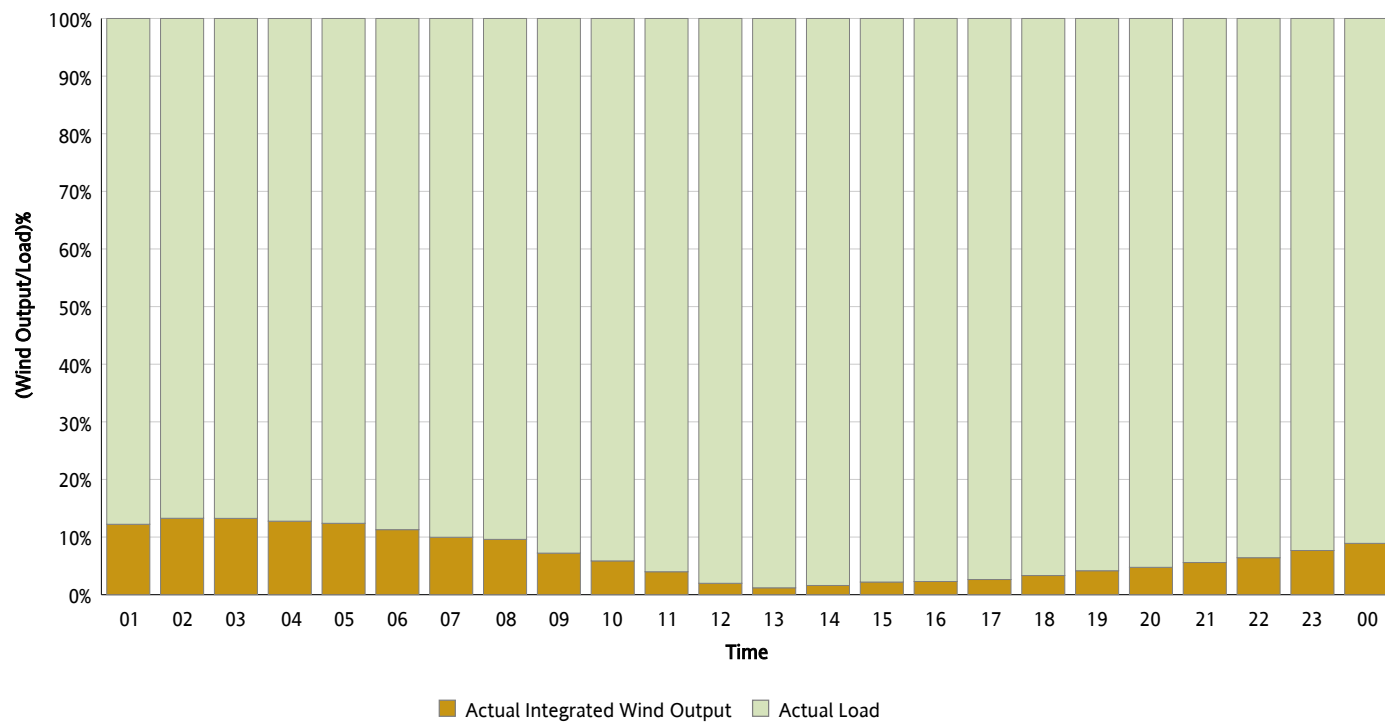
Actual Wind Output as a Percentage of the Total Installed Wind Capacity

09/05/2012



Actual Wind Output as a Percentage of the ERCOT Load

09/05/2012



ERCOT Load vs. Actual Wind Output

08/29/2012 - 09/05/2012

